

RAMCHANDI COLLEGE SARAIPALI

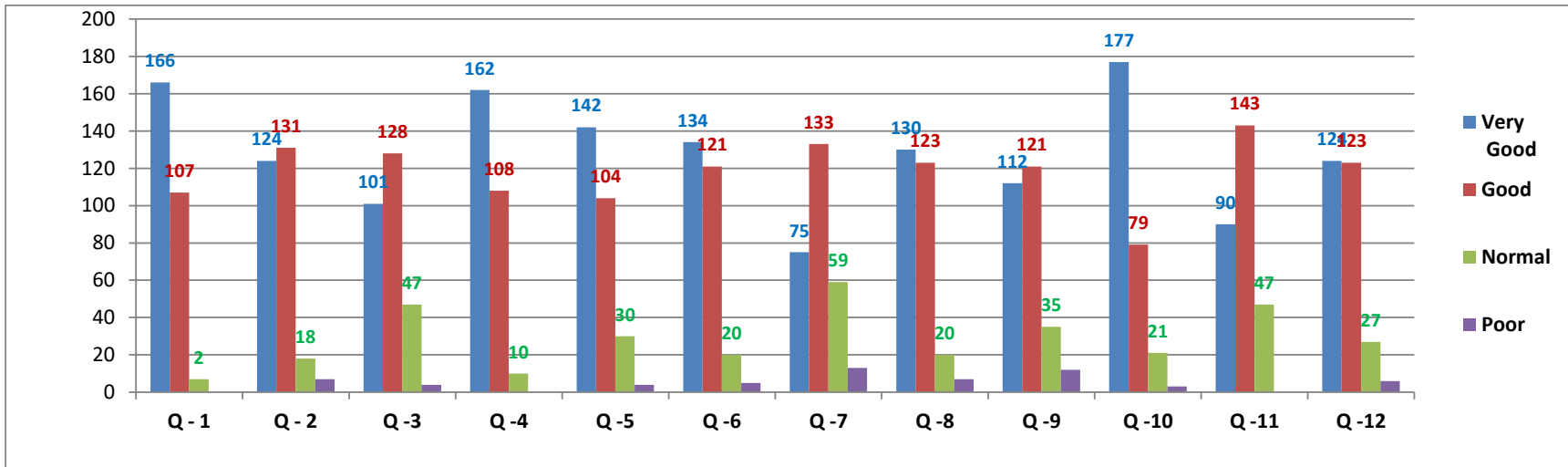
DIST-MAHASAMUND (C.G.)

ACADEMIC YEAR-2022-23

FEEDBACK ANALYSIS :-

FEEDBACK FROM STUDENT

Perticular	Question No.	Very Good	Good	Normal	Poor
How useful is your course career wise?	Q - 1	166	107	7	0
How is the arrangement of books in the library according to the syllabus?	Q - 2	124	131	18	7
What do you think about cleanliness in the college?	Q -3	101	128	47	4
How is the arrangement of drinking water in the college?	Q -4	162	108	10	0
How is the environment of the college from the point of view of teaching and learning?	Q -5	142	104	30	4
How is the discipline in the college?	Q -6	134	121	20	5
How is the cleanliness of the toilets in the college?	Q -7	75	133	59	13
How is the seating arrangement in the college?	Q -8	130	123	20	7
How is the sports competition / cultural program organized in the college?	Q -9	112	121	35	12
How is the co-operative attitude of the professors and staff towards you in the college?	Q -10	177	79	21	3
Your opinion on the overall facilities in the college?	Q -11	90	143	47	0
How are the facilities like furniture, electricity, black board etc. in the classrooms of the college?	Q -12	124	123	27	6
		1537	1421	341	61
TOTAL (%)	%	128	118	28.42	5.08



IQAC ANALYSIS OF STUDENT'S FEEDBACK ON - 128% are Very Good , 118% student are good , 28.42% are normal and 5.08% are none .