

# RAMCHANDI COLLEGE SARAIPALI

DIST-MAHASAMUND (C.G.)

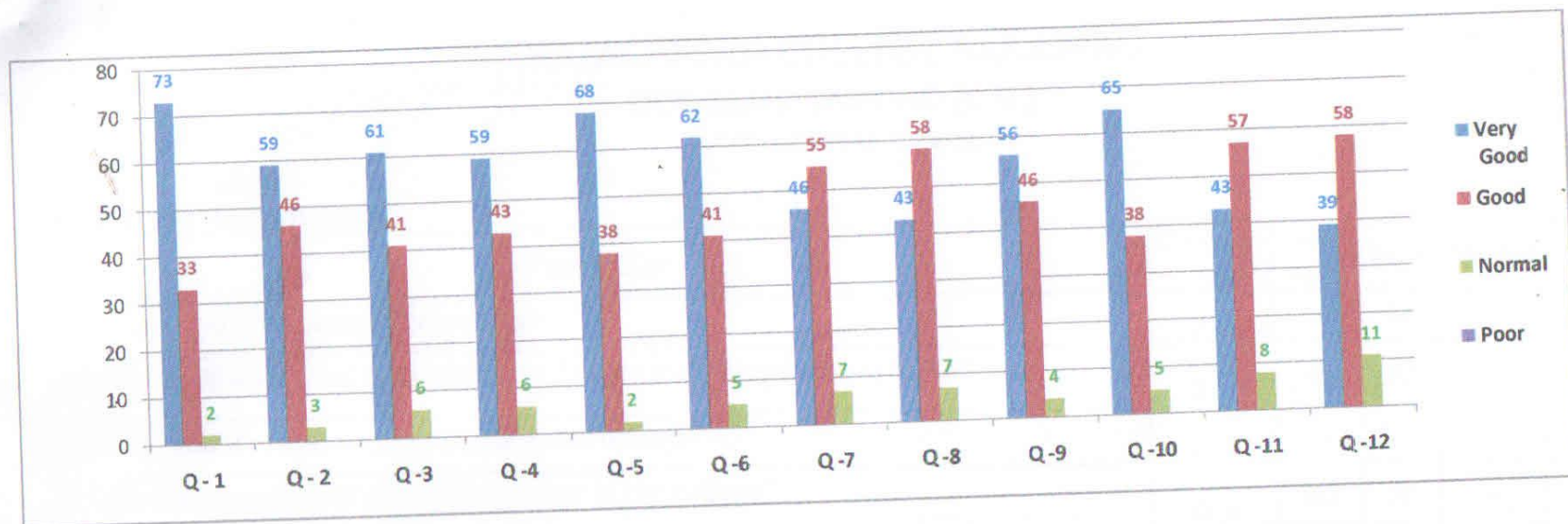
ACADEMIC YEAR-2017-18

## FEEDBACK ANALYSIS :-

### 1- FEEDBACK FROM STUDENT

Perticular	Question No.	Very Good	Good	Normal	Poor
How useful is your course career wise?	Q - 1	73	33	2	0
How is the arrangement of books in the library according to the syllabus?	Q - 2	59	46	3	0
What do you think about cleanliness in the college?	Q - 3	61	41	6	0
How is the arrangement of drinking water in the college?	Q - 4	59	43	6	0
How is the environment of the college from the point of view of teaching and learning?	Q - 5	68	38	2	0
How is the discipline in the college?	Q - 6	62	41	5	0
How is the cleanliness of the toilets in the college?	Q - 7	46	55	7	0
How is the seating arrangement in the college?	Q - 8	43	58	7	0
How is the sports competition / cultural program organized in the college?	Q - 9	56	46	4	0
How is the co-operative attitude of the professors and staff towards you in the college?	Q - 10	65	38	5	0
Your opinion on the overall facilities in the college?	Q - 11	43	57	8	0
How are the facilities like furniture, electricity, black board etc. in the classrooms of the college?	Q - 12	39	58	11	0
		674	554	66	0
<b>TOTAL (%)</b>	<b>%</b>	<b>56.2</b>	<b>46.2</b>	<b>5.5</b>	<b>0</b>

*M. Sh.*  
**RAMCHANDI**  
 Ramchandi College Saraipali  
 (Bagailor), Mahasamund (C.G.)



IQAC ANALYSIS OF STUDENT'S FEEDBACK ON - 56.2% are Very Good , 46% student are good , 5.5% are normal and 0% are none .

*[Signature]*  
 PRINCIPAL  
 Ramchandi College Saralpa  
 (Bachelior), Mahasamund (B.G.)



# RAMCHANDI COLLEGE SARAIPALI

DIST-MAHASAMUND (C.G.)

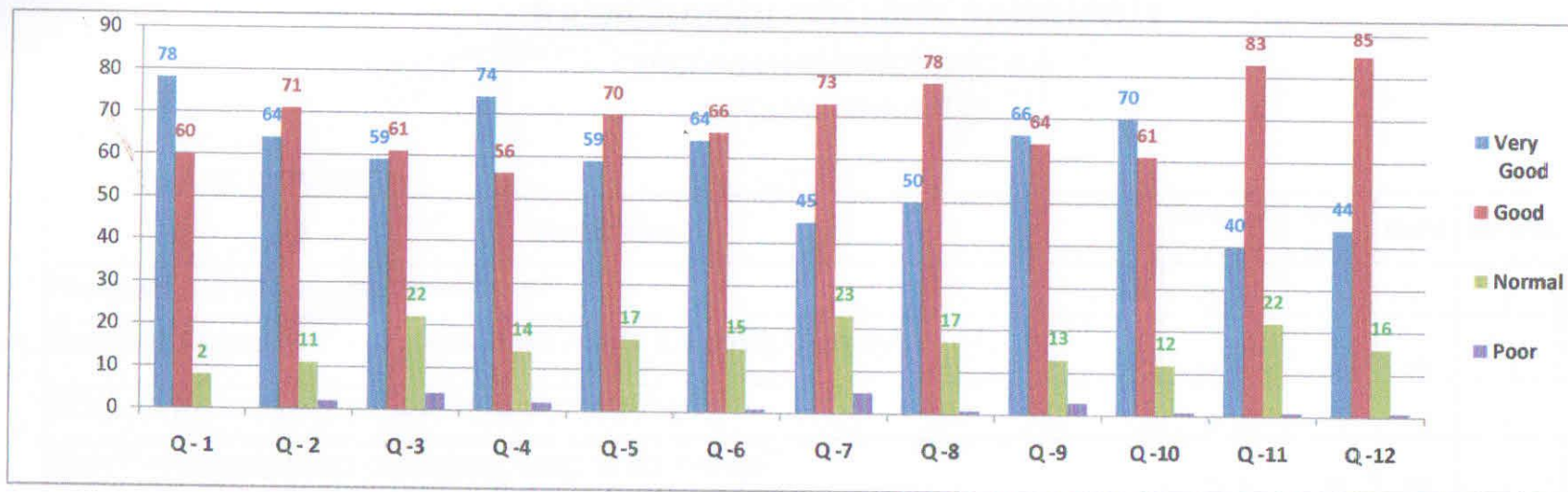
ACADEMIC YEAR-2018-19

## FEEDBACK ANALYSIS :-

### 1- FEEDBACK FROM STUDENT

Perticular	Question No.	Very Good	Good	Normal	Poor
How useful is your course career wise?	Q - 1	78	60	8	0
How is the arrangement of books in the library according to the syllabus?	Q - 2	64	71	11	2
What do you think about cleanliness in the college?	Q - 3	59	61	22	4
How is the arrangement of drinking water in the college?	Q - 4	74	56	14	2
How is the environment of the college from the point of view of teaching and learning?	Q - 5	59	70	17	0
How is the discipline in the college?	Q - 6	64	66	15	1
How is the cleanliness of the toilets in the college?	Q - 7	45	73	23	5
How is the seating arrangement in the college?	Q - 8	50	78	17	1
How is the sports competition / cultural program organized in the college?	Q - 9	66	64	13	3
How is the co-operative attitude of the professors and staff towards you in the college?	Q - 10	70	61	12	1
Your opinion on the overall facilities in the college?	Q - 11	40	83	22	1
How are the facilities like furniture, electricity, black board etc. in the classrooms of the college?	Q - 12	44	85	16	1
		713	828	190	21
<b>TOTAL (%)</b>	<b>%</b>	<b>59.4</b>	<b>69</b>	<b>15.83</b>	<b>1.75</b>

  
**PRINCIPAL**  
Ramchandi College Saraipali  
(Bagalpur), Mahasamund (C.G.)



IQAC ANALYSIS OF STUDENT'S FEEDBACK ON - 59.4% are Very Good , 69% student are good , 15.83% are normal and 1.75% are none .

*[Signature]*  
**PRINCIPAL**  
 Ramchandi College Saraipali  
 (Bagalitor), Mahasamund (C.G.)



# RAMCHANDI COLLEGE SARAIPALI

DIST-MAHASAMUND (C.G.)

ACADEMIC YEAR-2019-20

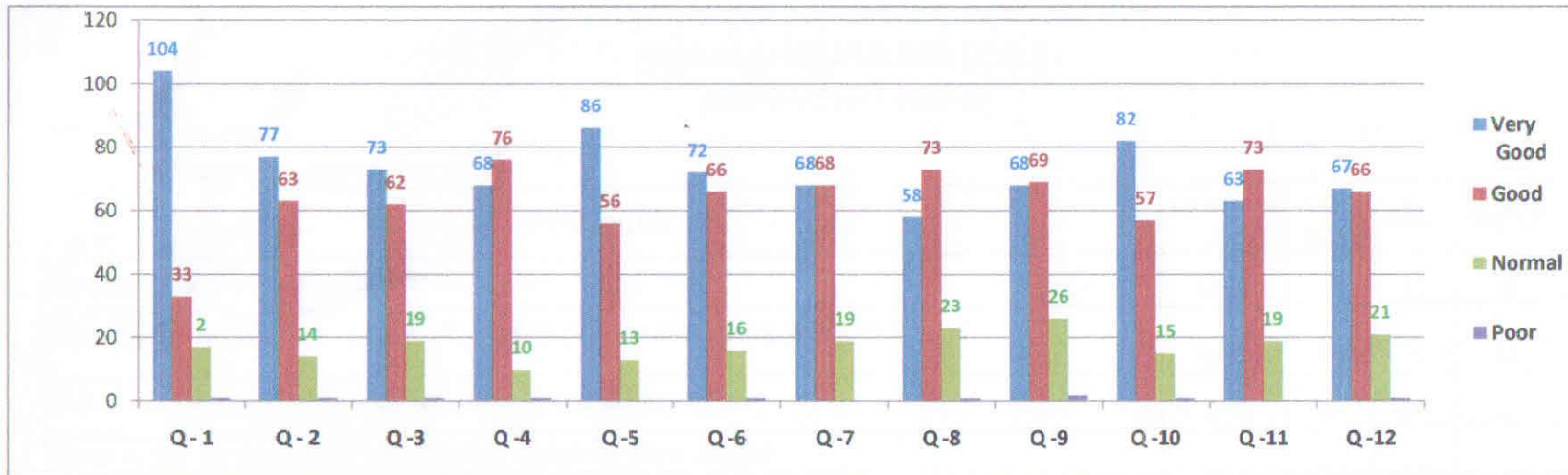
## FEEDBACK ANALYSIS :-

### 1- FEEDBACK FROM STUDENT

Perticular	Question No.	Very Good	Good	Normal	Poor
How useful is your course career wise?	Q - 1	104	33	17	1
How is the arrangement of books in the library according to the syllabus?	Q - 2	77	63	14	1
What do you think about cleanliness in the college?	Q - 3	73	62	19	1
How is the arrangement of drinking water in the college?	Q - 4	68	76	10	1
How is the environment of the college from the point of view of teaching and learning?	Q - 5	86	56	13	0
How is the discipline in the college?	Q - 6	72	66	16	1
How is the cleanliness of the toilets in the college?	Q - 7	68	68	19	0
How is the seating arrangement in the college?	Q - 8	58	73	23	1
How is the sports competition / cultural program organized in the college?	Q - 9	68	69	26	2
How is the co-operative attitude of the professors and staff towards you in the college?	Q - 10	82	57	15	1
Your opinion on the overall facilities in the college?	Q - 11	63	73	19	0
How are the facilities like furniture, electricity, black board etc. in the classrooms of the college?	Q - 12	67	66	21	1
		886	762	212	10
	%	73.8	63.5	17.67	0.83

TOTAL (%)

PRINCIPAL  
Ramchandi College Saraipali  
(Bagajon), Mahasamund (C.G.)



IQAC ANALYSIS OF STUDENT'S FEEDBACK ON - 73.8% are Very Good , 64% student are good , 17.67% are normal and 0.83% are none .

*Handwritten signature*  
**Ramchandi College Saralpa**  
 (Baga(tor), Mahasamund (C.G.



# RAMCHANDI COLLEGE SARAIPALI

DIST-MAHASAMUND (C.G.)

ACADEMIC YEAR-2020-21

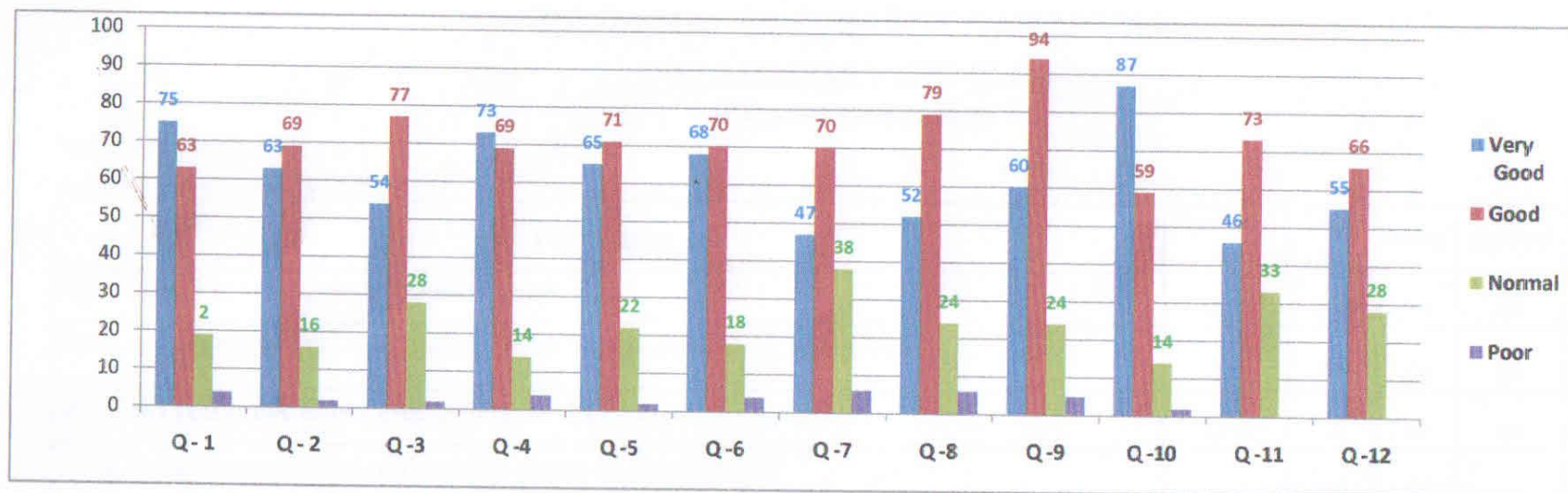
## FEEDBACK ANALYSIS :-

### 1- FEEDBACK FROM STUDENT

Perticular	Question No.	Very Good	Good	Normal	Poor
How useful is your course career wise?	Q - 1	75	63	19	4
How is the arrangement of books in the library according to the syllabus?	Q - 2	63	69	16	2
What do you think about cleanliness in the college?	Q - 3	54	77	28	2
How is the arrangement of drinking water in the college?	Q - 4	73	69	14	4
How is the environment of the college from the point of view of teaching and learning?	Q - 5	65	71	22	2
How is the discipline in the college?	Q - 6	68	70	18	4
How is the cleanliness of the toilets in the college?	Q - 7	47	70	38	6
How is the seating arrangement in the college?	Q - 8	52	79	24	6
How is the sports competition / cultural program organized in the college?	Q - 9	60	94	24	5
How is the co-operative attitude of the professors and staff towards you in the college?	Q - 10	87	59	14	2
Your opinion on the overall facilities in the college?	Q - 11	46	73	33	0
How are the facilities like furniture, electricity, black board etc. in the classrooms of the college?	Q - 12	55	66	28	0
		745	860	278	37
<b>TOTAL (%)</b>	<b>%</b>	<b>62.1</b>	<b>71.7</b>	<b>23.17</b>	<b>3.08</b>

*Nishu*  
PRINCIPAL

Ramchandi College Saraipali  
(Bapatpur), Mahasamund (C.G.)



IQAC ANALYSIS OF STUDENT'S FEEDBACK ON - 62.1% are Very Good , 72% student are good , 23.17% are normal and 3.08% are none .

*NDM*  
 PRINCIPAL  
 Ramchandi College Saraipai  
 Bagalpur, Mahasamund (C.G.)



# RAMCHANDI COLLEGE SARAIPALI

DIST-MAHASAMUND (C.G.)

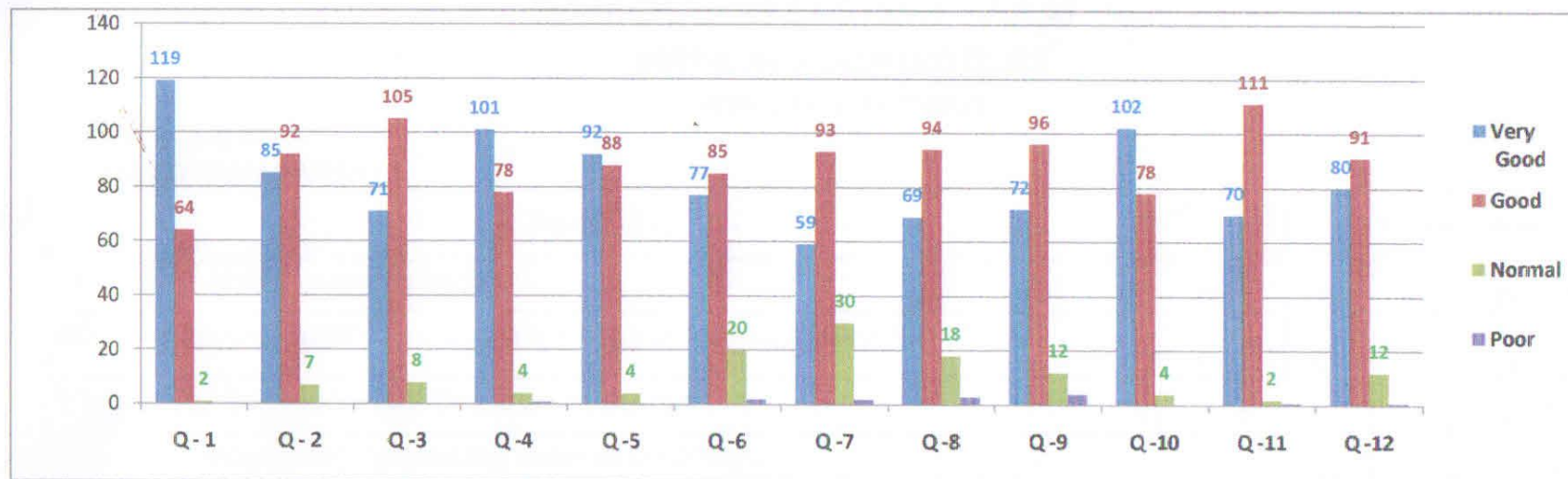
ACADEMIC YEAR-2021-22

## FEEDBACK ANALYSIS :-

### 1- FEEDBACK FROM STUDENT

Perticular	Question No.	Very Good	Good	Normal	Poor
How useful is your course career wise?	Q - 1	119	64	1	0
How is the arrangement of books in the library according to the syllabus?	Q - 2	85	92	7	0
What do you think about cleanliness in the college?	Q - 3	71	105	8	0
How is the arrangement of drinking water in the college?	Q - 4	101	78	4	1
How is the environment of the college from the point of view of teaching and learning?	Q - 5	92	88	4	0
How is the discipline in the college?	Q - 6	77	85	20	2
How is the cleanliness of the toilets in the college?	Q - 7	59	93	30	2
How is the seating arrangement in the college?	Q - 8	69	94	18	3
How is the sports competition / cultural program organized in the college?	Q - 9	72	96	12	4
How is the co-operative attitude of the professors and staff towards you in the college?	Q - 10	102	78	4	0
Your opinion on the overall facilities in the college?	Q - 11	70	111	2	1
How are the facilities like furniture, electricity, black board etc. in the classrooms of the college?	Q - 12	80	91	12	1
		997	1075	122	14
<b>TOTAL (%)</b>	<b>%</b>	<b>83.1</b>	<b>89.6</b>	<b>10.17</b>	<b>1.17</b>

  
**PRINCIPAL**  
 Ramchandi College Saraipali  
 Baga (nr), Mahasamund (C.G.)



IQAC ANALYSIS OF STUDENT'S FEEDBACK ON - 83.1% are Very Good , 90% student are good , 10.17% are normal and 1.17% are none .

*[Signature]*  
**PRINCIPAL**  
 Ramchandi College Sarapali  
 (Begalpur), Mahasamund (C.C)